

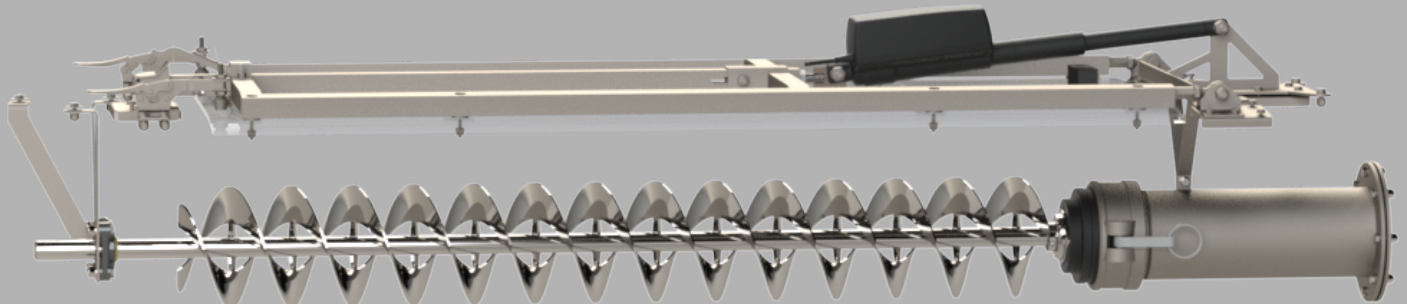


INNOVATIVE AND RELIABLE PRODUCTS  
DESIGNED WITH THE PILOT AND  
MECHANIC IN MIND

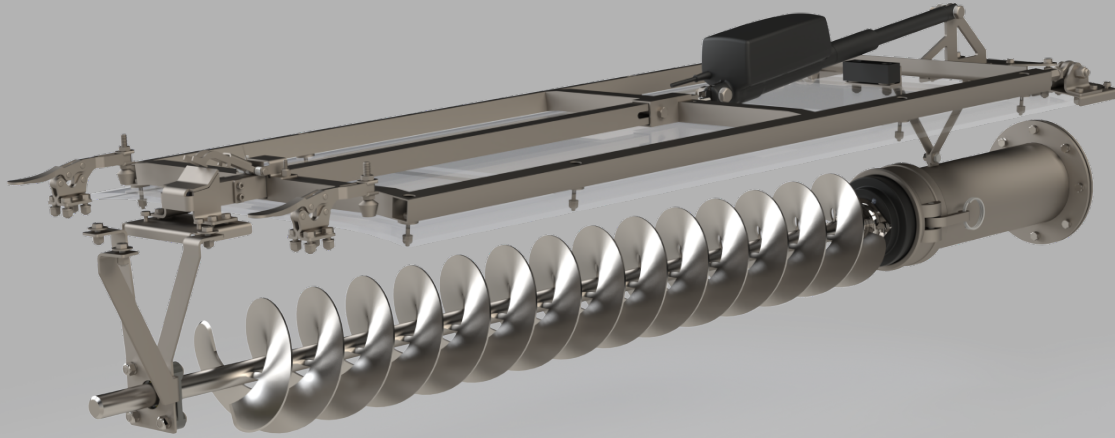
## Reabe Hopper Packer electric auger and hopper door

The auger is easily removable by one person with **NO tools**.

The hopper door has a **liquid tight seal** and has been a proven system in Australia for 30 years.



# Reabe Hopper Packer:



## Hopper Door:

- » Switches inside the cockpit operate door and run the auger.
- » Roller latch provides a liquid tight seal.
- » Utilizes an industrial grade electric motor to power the door. The door does not slam.
- » Can mechanically be operated in case of motor/switch failure.
- » Proven hopper door design that has been praised in Australia for 30 years.

## Electric Auger:

- » Powerful Electric auger that spins in both directions and can easily churn through Pot Ash.
- » Quick Disconnect System so the auger can be inserted or removed by one person with NO tools.
- » The easily removable auger will have increased logevity as it will not be sitting in chemical.
- » Rinse tank stays in aircraft.
- » No electrical connections or electrical lines pass through chemical in the hopper.

Pilot and mechanic feedback has been vital in the development of the Reabe Hopper Packer that has lead to features that no other system on the market can match.

For ordering information or to access manuals, install instructions, and support videos:

Phone: 321-AIR-TRAC  
Email: Sales@ReabeAir.com  
Web: ReabeAir.com